

FIG. 1

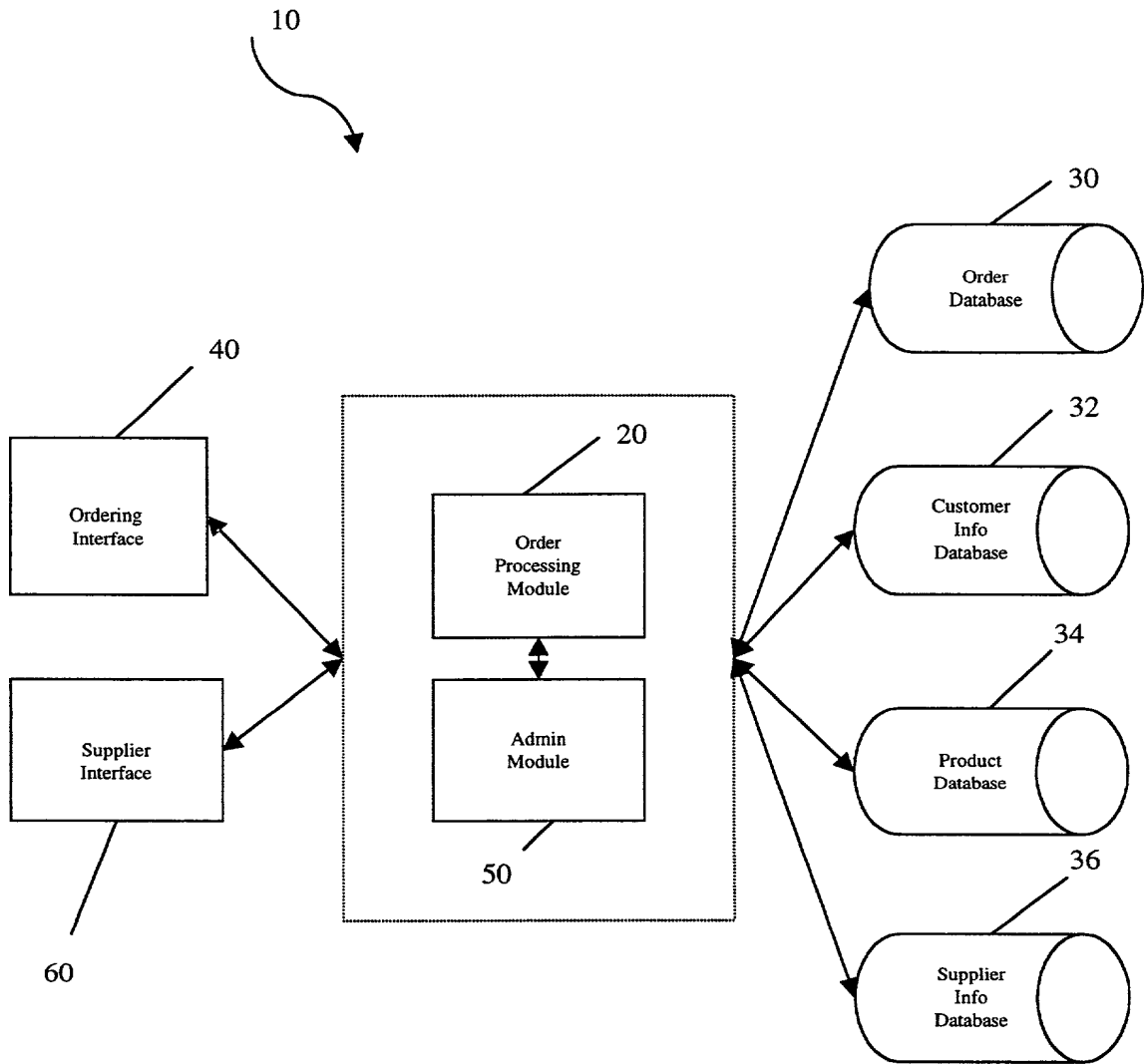


Figure 1

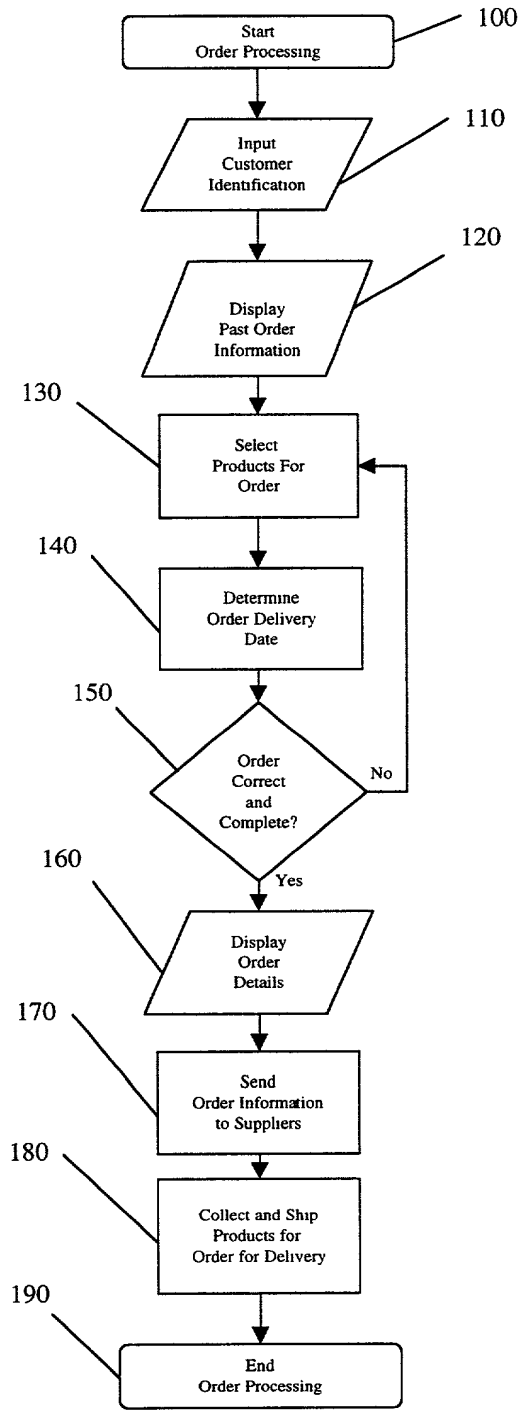


Figure 2

44200000

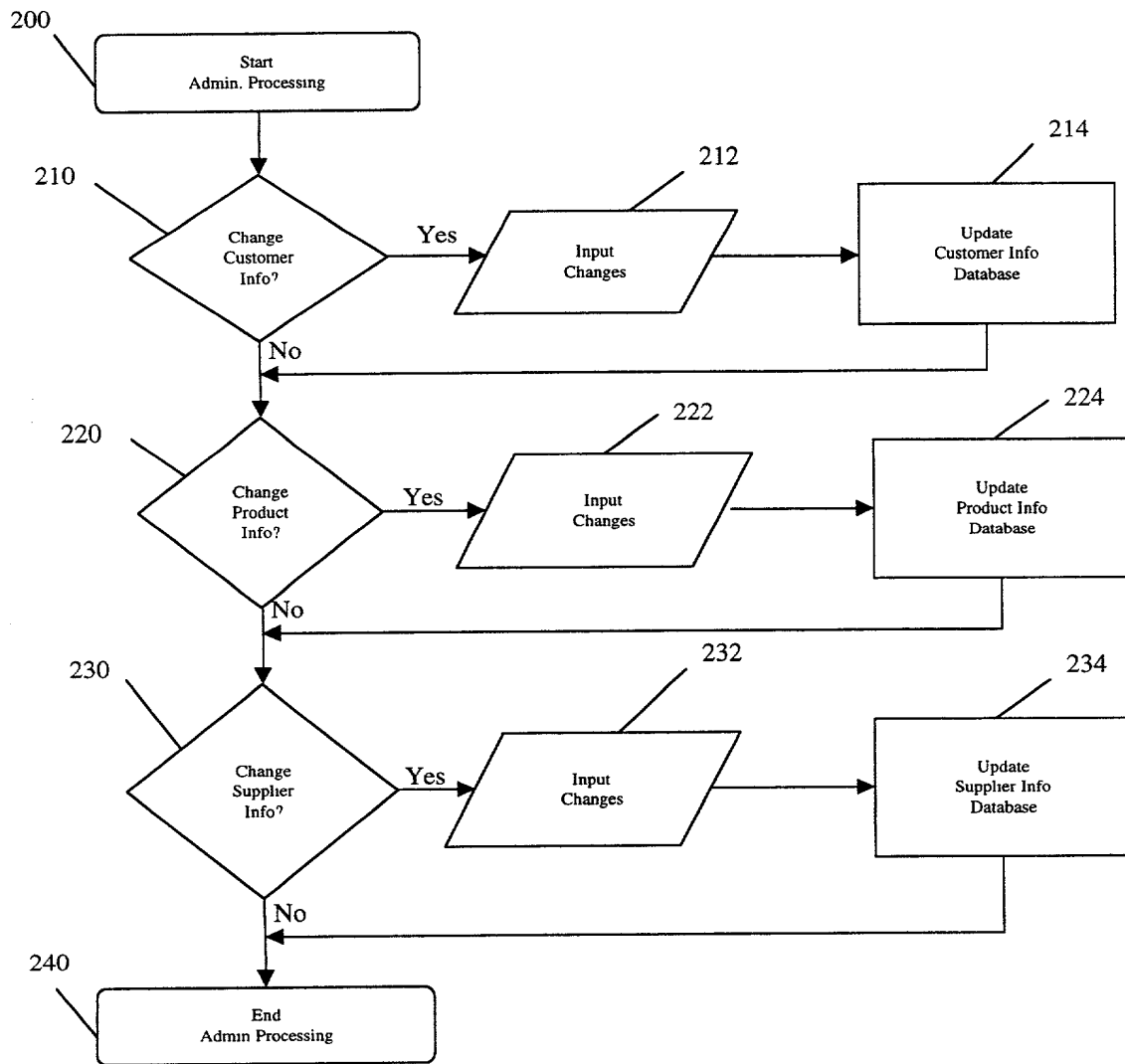


Figure 3

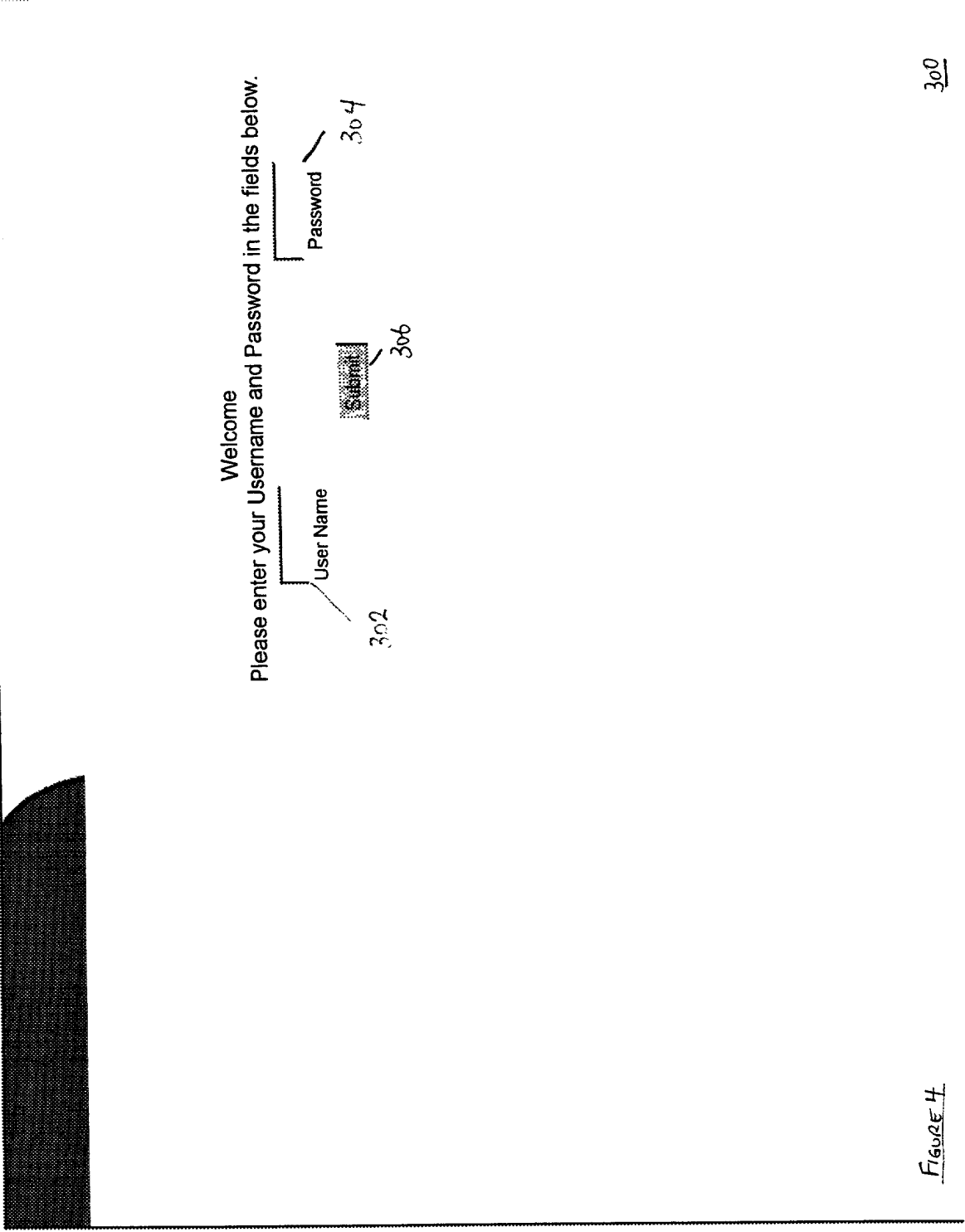


FIGURE 4

Welcome to the Express Ordering System, the only supermarket food processing order system available on-line. This note is available by Store ID ONLY!!

Please verify that the information listed below is accurate. We rely on the accuracy of this information to distribute perishable goods. If you are not the person identified, exit the site immediately and try to log on again. If you are the person identified, select "Correct" and proceed to the order processing area. If any of the information listed needs to be corrected, please contact the System Administrator by clicking on the "Administration" button below.

Jasmine Barrette **Salad Station** **ABC Marche** }
Retail Station **123 Any Street** } 312
Soup Station **Toronto Ontario M1N1N1** }
Phone 416- 222-1234
Fax 416- 222-1235

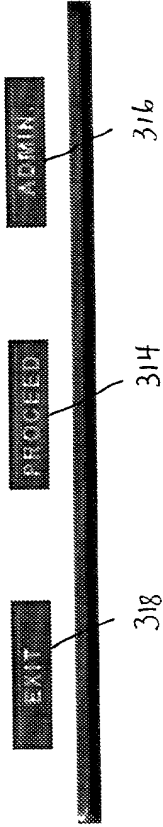


Figure 5

Welcome Jasmine Barrette

326 / 328

- 330 Order Desk
- 332 Information
- Post Office
- Review Orders
- Help
- Home Page

ALL OUTSTANDING Orders for ABC Marche

Today's Date: Tuesday May 23, 2000

Below is a list of all orders that are in the system but have NOT been shipped.

Order #	Supplier	Order Date	Delivery Date	Ordered By	Status
525	Supplier A	May 20, 2000	May 24, 2000	Jasmine	Received
526	Supplier B	May 23, 2000	May 27, 2000	Jasmine	Submitted
580	Supplier C	May 23, 2000	May 27, 2000	Louie	Submitted

321 }
 321 }
 324 }
 322 }

Click on the "Order Number" to review an order.

Figure 6

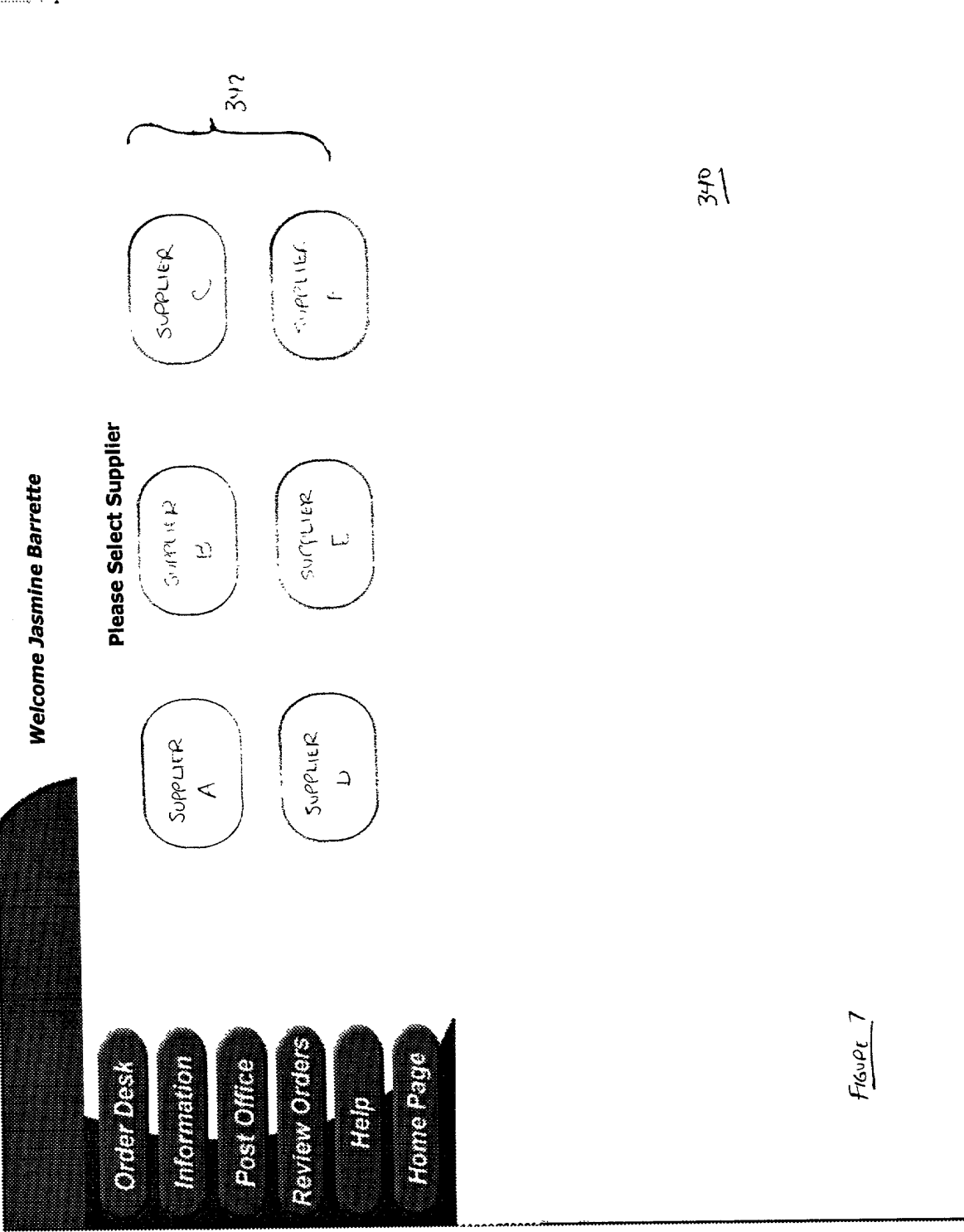


Figure 7

Welcome Jasmine Barrette

- Order Desk
- Information
- Post Office
- Review Orders
- Help
- Home Page

Specials

SUPPLIER
A

Item	Code	Packaging Feature	Feature Price
352- Bruschetta Modena	MV-BR	4 KG. Through May 30, 2000	20% off
352- Chick Pea Salad	MV-CP	4 KG. Through May 30, 2000	20% off
352- Coleslaw	MV-COLE	3 KG. Through May 30, 2000	20% off
352- Orzo Salsa Salad	ORZ	4 KG. Through May 30, 2000	20% off
352- Waldorf Salad	W	4 KG. Through May 30, 2000	20% off
352- Caesar Dressing	MV-CD	4 KG. Through May 30, 2000	20% off

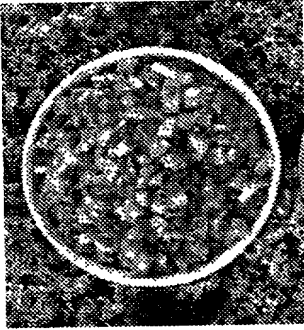
352

Proceed to Order Page 354

350

Figure 8

Bruschetta Modena



INGREDIENTS: TOMATO KETCHUP (TOMATO PASTE, SUGAR, WHITE VINEGAR, SALT, ONION POWDER, SPICES), BEEF, PICKLES, WATER, TOMATOES, PEPPER, ONIONS, OLIVES, VINEGAR, JALAPENO PEPPERS, SALT, HERBS AND SPICES

Package and Size

4 kg. easy carry pail.

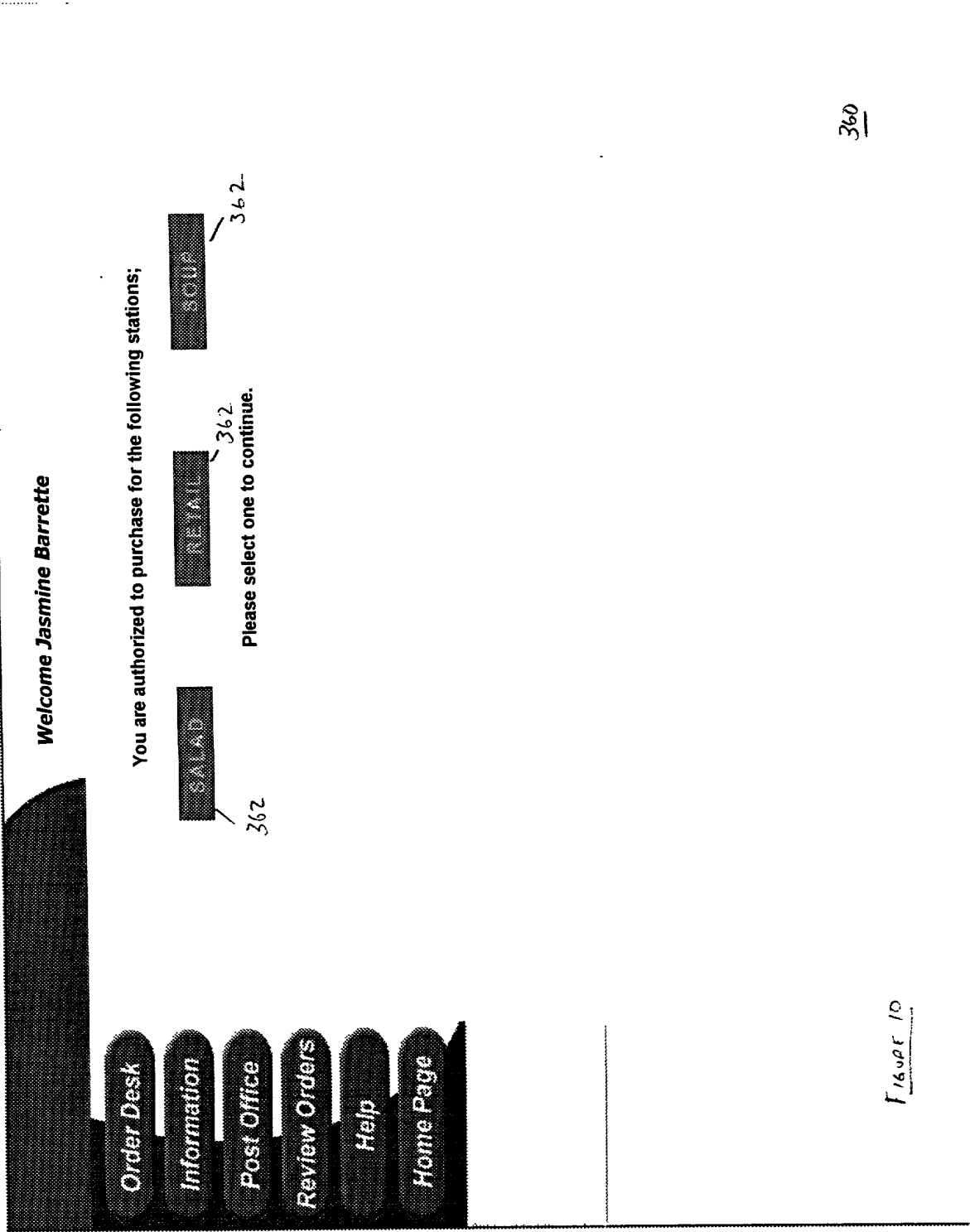
Handling Information

Refrigerate at 4 - 6 degrees centigrade. Open air chiller can reduce shelf life. Standard replenishment time 6 - 10 days.

Details

24 hour turn-around on orders placed before 2 pm.

\$22.64 / 4kg. pail



Welcome Jasmine Barrette

Order Desk

Information

Post Office

Review Orders

Help

Home Page

Save Order | Repeat "Last Order" | Submit Order | Explain Options

372 / 372

P.O. # 376

SUPPLIER A SALAD

Please place your order for

First Possible Delivery Date: May 27 2000 } 375

SALAD - BULK

Description	Code	Packaging	Last Order	QTY
Artichoke Toulouse	ATS	4 KG.	3	
Baby Vegetable	BV	4 KG.	0	
Bruschetta Modena	MV-BR	4 KG.	0	
Carrot & Raisin Salad	BR	4 KG.	0	
Chick Pea Salad	MV-CP	4 KG.	6	
Chinese Noodle Salad	MV-CN	3 KG.	0	
Coleslaw	MV-COLE	3 KG.	0	
Cousc. Blk Bean & Corn	CBC	4 KG.	4	
Creamy Coleslaw	CCOLE	5 KG.	0	
Creamy Potato Salad	MV-CPS	4 KG.	0	
Creole Rice & Bean	CRB	4 KG.	0	
Curry Chicken Bombay	CBOM	4 KG.	0	
Deluxe Bean	DB	4 KG.	0	
Dill Matjes Salad	DMHS	4 KG.	9	

374 NEW

374 NEW

374 NEW

374 NEW

374 NEW

373

370

1600 11

Welcome Jasmine Barrette

Order Desk

Information

Post Office

Review Orders

Help

Home Page

SUPPLIER
A

Please confirm order details prior to submitting.

Confirmation number will appear after order submitted

<u>Item #</u>	<u>Description</u>	<u>Unit Of Measure</u>	<u>Qty.</u>
CRB	Creole Rice & Bean	4 kg.	1
MV-COLE	Creamy Coleslaw	4 kg.	3
MV-CSR	Carrot and Rasin	4 kg.	2
MV-CPS	Chicken Bombay	4 kg.	1
ProductCode	Garden Salad	3 kg.	1

Order Delivery Date: May 27, 2000

Notes: This is a Saturday Delivery so please have driver ask for Jocelyn, 381

Submit 382

or return to order form to modify your order.

Welcome *Jasmine Barrette*

Your Order Has Been Received

This order will appear next time you log in.

Order Delivery Date; Saturday May 27, 2000

Salad Station Order. P.O.# 2222

Order Confirmation Number 600

Thank you for choosing Supplier A.

- Order Desk
- Information
- Post Office
- Review Orders
- Help
- Home Page

390

1/15/00 12